



**MALTBYLEARNINGTRUST**

Exceptional Experiences. Successful Lives.



Wath  
Academy  
Sixth Form

# Enrichment

at Wath Academy  
Sixth Form

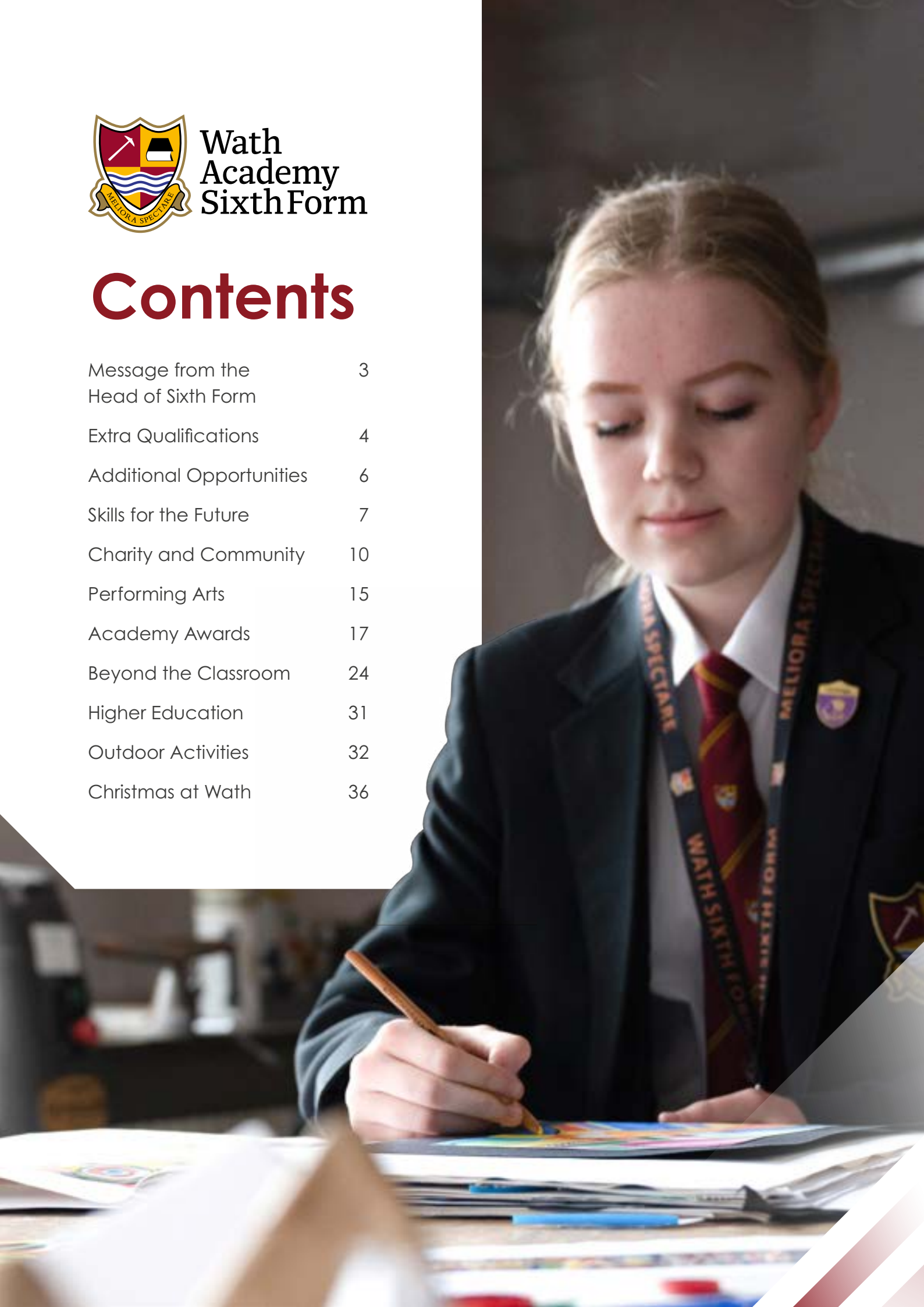
There's more to sixth form  
than just lessons



Wath  
Academy  
Sixth Form

# Contents

Message from the Head of Sixth Form	3
Extra Qualifications	4
Additional Opportunities	6
Skills for the Future	7
Charity and Community	10
Performing Arts	15
Academy Awards	17
Beyond the Classroom	24
Higher Education	31
Outdoor Activities	32
Christmas at Wath	36





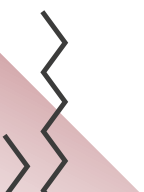
# Message from the Head of Sixth Form

At Wath Academy Sixth Form, our aim is to produce well-balanced and responsible young adults, fully prepared to take their places in higher education and the professions.

We have a proud history and proven track record of developing well-rounded students who have the qualifications, skills and character to go on and lead happy, successful lives. While subject choices are crucial for future successes, they will only ever help with obtaining an interview – securing the job depends upon character.

The involvement students have in activities outside of the classroom will significantly contribute to their overall development. I am sure that you will be as impressed as I am at the amount of enrichment activities that our students are involved in.

**Miss Slasor**  
Head of Sixth Form





# Extra Qualifications

## Extended Project Qualification

Our students can opt to study for the Extended Project Qualification alongside their other A Level or BTEC choices. The course is designed to prepare students for academic life at university, with a big emphasis on independent learning.

Students design their own research project, shaped from their personal interests and they then organise their time to research, plan, write, present and evaluate their final project. The outcome can be a research paper, a scientific report or even something artistic.

Students come to the Extended Project with all areas of expertise and past projects have varied from K-pop, the Ottoman Empire and building a computer from scratch. The course lasts for a year and is the equivalent of half an A Level. Unlike many one-year courses, an A\* is also available to students, which means highly successful projects can gain a few extra UCAS points!

Universities also love students who study an Extended Project, which means they often lower their entry requirements for successful completion of the course.

## Core Maths

The Core Maths qualification is designed to challenge students with meaningful mathematical problems that increase their confidence and competency when using maths.

Students on this course will most certainly be better equipped for the mathematical demands of other courses, higher education, employment and life.

This course is ideal for students wishing to carry on studying Maths, but not the A Level. It is suitable for students who are studying Biology, Chemistry, Physics, Psychology, Economics and Business.

It is a linear qualification that is completed in May/June of Year 13 and has the same UCAS points as an AS qualification.

Students require a Grade 5 or above in GCSE Mathematics.

## Further Maths

Sixth formers at Wath have the option to complete an AS Further Mathematics qualification as an enrichment option. This qualification builds on topics from A Level Maths and decision maths, a relatively new branch of mathematics but one that has far-reaching uses in today's world.

The breadth of study in the course allows students to learn further algebraic techniques, proof, complex number, matrices and vectors in 3D.

Additionally, we look at game theory and a variety of algorithms to model everyday situations.

Students who study Further Maths will be ideally positioned to go on and study mathematics at university, but the course would equally suit those who have a strong interest in studying maths for the beauty of it.







# Skills for the Future

## Life Skills

As part of our Life Skills programme, students develop their knowledge of the three core themes recommended by the PSHE Association, at a level appropriate to their age.

### Core Theme 1: Health and wellbeing

Students develop a knowledge of importance topics to keep them physically and psychologically well. This includes sessions around self esteem and cosmetic procedures, identifying and managing mental health problems, drug and alcohol awareness and the impact on road safety, sexual health and how to identify and self examine for a range of cancers.

### Core theme 2: Relationships

Within these sessions student explore issues around consent and sexual misconduct, forming, maintaining and ending mature relationships as well as identifying and challenging bullying, prejudice and discrimination.

### Core theme 3: Living in the wider world

We put great emphasis on developing our students to be responsible citizens. In order to achieve this students will cover content such as social media and building a professional online profile, financial literacy including tax, debt and budgeting as well as their rights and responsibilities as an employee



## Votes for Schools

Votes for Schools is a debate and online voting system designed to give all young people a better knowledge of current affairs.

During tutor period each week, students participate in lively debate about a topical issue, which is then followed by a class vote.

Recent topics have included "are communities strengthened in a crisis?", "will increased awareness help end modern slavery?" and "should male and female mental health be approached differently?".

Wath Academy alumna Olivia Bell was able to use the knowledge gained from one session in her interview for a place to study Law at the University of Cambridge and subsequently received an offer.



## The Torch

The Torch is Wath Academy's student newspaper – the perfect place for students to make their voices heard! We meet weekly after school and publish a new edition of the newspaper every half term.

The newspaper attracts journalists from all year groups, and the role of a sixth form journalist can involve all stages of the newspaper's production, such as seeking out a scoop, working with younger writers to help them develop their skills, editing articles, developing proof-reading skills and layout design.

This is the perfect enrichment opportunity for any student considering a career in media or journalism.

"Being a part of The Torch allowed me to meet fantastic people who taught me so many great things which helped me greatly throughout my A Level courses," said Wath Academy alumna Emily Balaiss.

Wath Academy alumna, Molly Hammerton adds: "The Torch has a wonderful atmosphere and includes people with diverse interests. It allows you to express your opinions and views of the world within a format that is professional and is similar to the journalism field, which is useful if that is the career you wish to pursue."

## Independent Study

Students at Wath Academy Sixth Form benefit from a dedicated sixth form study area to use during their study periods and before and after school.

This area is in the centre of the school and conveniently close to the sixth form office.

It is equipped with a bank of laptops, as well as refreshment facilities, to allow students to use their non-contact time productively.

In addition, many sixth formers take advantage of other independent study areas around the school, such as the library.

**"I really enjoy writing for The Torch because it provides a great opportunity to write and complete further research into the subjects that you are studying."**







## VESPA

VESPA is part of the tutor programme at Wath Academy Sixth Form. The aim of VESPA is to assist students in the challenging transition from GCSE to A Level study, where there is an increased need for a proactive, resilient and independent approach to study.

Each letter of the acronym represents an area that students will develop during their time in the Sixth Form at Wath Academy:

**V**ision is about having a clear goal.

A wealth of research highlights that both long-term and short-term goal setting enhances achievement. In simple terms, it is about learners knowing the outcomes they wish to achieve.

**E**ffort (sometimes called academic perseverance) refers to how much hard work a student does; performance on most tasks depends on effort that is proactive and independent.

**S**ystems is about two things:

1. a system to organise learning so students can make sense of it all.
2. a system to organise their time so students can complete key tasks to meet deadlines.

**P**practice should be considered as distinct from effort – it refers to what learners do with the time they put into their studies. Practice is not the “how much?” but rather the “how?”.

**A**ttitude has four elements:

1. Confidence (in particular, confidence in abilities).
2. Emotional control.
3. Academic buoyancy.
4. Growth mindset.

Research suggests that all students need an element of these five aspects in order to achieve their full potential, meaning they are crucial for success.

Through tutor support, assemblies and coaching, we provide students with activities, tools and guidance to support their journey through VESPA.



# Charity and Community

Through extra-curricular involvement, students develop exceptional character and rich life experiences so that they thrive and excel in life.

The Sixth Form Experience Passport advocates exposure to a wide range of ageappropriate, life-enriching experiences. Trips will be organised by the academy to help you complete the activities in the passport and you can include out of school experiences. The passport ensures that you have experiences outside the 'everyday norm' that will give you the confidence to make brave choices beyond your time at Wath Academy.

The activities are grouped together into the following categories:

## **Religion and Culture**

Visits to religious landmarks, participation in an unfamiliar religious festival and cultural visits to an opera.

## **Sport and Outdoor**

Physical challenges, outdoor pursuits, climbing a mountain and attending an international sports fixture.

## **Heritage**

Visits to the Houses of Parliament, museums and English Heritage/National Trust sites.

## **Careers and Enterprise**

Creating a company and raising a profit, exploring Post-18 choices and increasing employability skills.

## **World and Travel**

Visiting a European capital city, learning about other cultures and exploring new foods and literature.

## **Community**

Charity events, clean-up projects, local projects and Race for Life



## House System

Wath Academy is proud of its house system, which dates back to the school's foundation in 1923.

All students are placed into a tutor group and represent one of the six houses, which are named after the ancient cities of Athens, Carthage, Rome, Sparta, Thebes and Troy.

Many house activities and competitions take place each week of the academic year.

Sixth form students play an important role in the whole school house system: Year 12 students can apply for the position of House Captain and be responsible for the organisation of house activities across the school.



## In-Class Support

Sixth form students can opt into in-class support, an enrichment opportunity that gives them the opportunity to work alongside teachers for one or two lessons per week to provide support for students in younger years in the subject of their choice.

This is particularly useful for those wishing to pursue a career in teaching or wishing to work with children or young people.

"I personally want to go into a health-based career, so in-class support is helpful as it allows me to work with children and young people," Wath Academy former student, Laura Rodgers comments. "It is really beneficial for both you and the younger students, which makes it a wonderful experience.

"You can also tailor the classes you support to the field you would like to go into, which makes it all the more meaningful."







## Christmas Hampers

Every year at Christmas time, tutor groups across the school get together to design and make a hamper to be donated to members of our local community. This is a house competition and the staff and students work really hard to design creative and thoughtful hampers.

Our sixth form students have a very important role in this event, as not only do they also provide a hamper from their tutor groups, but they also assist by working with younger students in other tutor groups in the designing of the hampers. At the end of the competition, they help to deliver the hampers. Last year, they delivered over 80 hampers, which were gratefully received by vulnerable members of the community.

## Revision Mentors

Wath Academy runs a rigorous programme of after-school revision for Year 11 students, and the input sixth form students is always highly appreciated by both staff and students. Sixth form students are able to share their first hand experiences and expertise, including tips and tricks that got them through the tricky period of examinations.

"It allows you to enhance your communication skills, whether on a one-to-one basis or in front of multiple people, as well as being a way of utilising the knowledge you gained at GCSE which is helpful to others," says Wath Academy alumna, Molly Hammerton.

## Senior Students & Student Voice

Student voice is a key driving force behind school-wide strategic decisions, actively working to raise standards across the whole school and ensure an outstanding school experience for all students.

All sixth form students are given the opportunity to take on leadership roles within the school council or act as student ambassadors. This involves taking key leadership roles across a range of action groups, guiding younger pupils in the discussion, planning and implementation of new initiatives that will benefit the whole school. Students will be able to apply for the role of Senior Student in January of Year 12 with an additional opportunity to apply for the role of Head Student, Deputy Head Student and Assistant Head Student at the end of Year 12.



"Every year at Christmas time, tutor groups across the school get together to design and make a hamper to be donated to members of our local community."





# Performing Arts

## Drama & Theatre

There is a great range of extracurricular activities available at Wath in drama.

A highlight of every year is the whole school production at Christmas, which combines acting, singing and dancing along with a whole raft of backstage and set design opportunities and, while the Christmas production is open to all students, we often find that our sixth form performers make great role models for younger students. Previous productions have included pantomimes, such as Cinderella, and adaptations of classics, like Charles Dickens' A Christmas Carol.

Students have the opportunity to attend a number of theatres productions. Over the last few years students have visited local theatres such as Sheffield Lyceum to view productions such as One Man, Two Guvnors, starring James Corden.

We also had a "frightfully" entertaining evening at Sheffield Lyceum when we saw a production of The Woman in Black.

Further to this, we support the Sheffield theatres scheme "Ignite", which is available for all of our Drama students and allows them to one free ticket, and a second at £5, for any Sheffield Theatres productions in the Crucible Theatre. These evenings are open to an audience consisting of staff, parents and older students and prove, yearly, to be a fantastic success.

There are also a number of opportunities on offer to see live theatre. We have a subscription to the National Theatre Collection which gives us access to National Theatre productions, such as Frankenstein starring Benedict Cumberbatch.

## Murder Mystery Evening

Every year, the Year 13 Drama group works alongside Drama staff to write, produce and perform a fantastic evening's entertainment in the shape of a murder mystery. Last year's production was titled "Perish and Prejudice" which documented the tragic tale of infidelity and greed leading to a gruesome end at the annual church fayre. Featuring food, drinks and twists and turns aplenty, this evening is always a great way to celebrate the end of the first half term".









# Academy Awards

This year we held our first ever academy awards ceremony at Sheffield City Hall. Performers from Years 7 to 13 collaborated to put together breathtaking performances for a sold out audience of over 2000 people. We also took the opportunity to award students for their attendance, attainment and progress in all subjects, with celebrity guests handing out over 400 awards.

This will now become an annual event that we will strive to make bigger and better each and every year.



## Dance Enrichment

Dance enrichment is an opportunity for any students to perform, keep fit and make new friends within the sixth form. It is perfect for those who love to dance and would like to be involved in different performances and opportunities throughout the year. Free from the stress of performing to gain a qualification, we look at broadening students' knowledge and experiences, which can be used later on UCAS applications and in interviews. There are weekly technique classes and also different fitness classes such as clubbercise, zumba and yoga.

Students are involved in creating performance pieces, in particular for our annual dance performance: Movement Evening. There is also the opportunity to get involved with competition pieces for regional competitions such as Crossing Borders and Fresh.

In addition, there is the chance to attend workshops in aerial arts and dance conventions, such as the national convention Move It! and events at higher education institutions like the University of Central Lancashire.

Work experience can also be gained through dance enrichment, such as through shadowing teachers and planning lessons. Students could lead or be involved in running KS3 for part of the year, developing teaching skills. There is also the opportunity to work with our primary schools, teaching KS2 children performance pieces for our annual dance show.

Everyone is welcome to dance enrichment, regardless of previous experience. Students can have fun, try new things and learn new skills.

**“Everyone is welcome to dance enrichment, regardless of previous experience.”**





## Music Activities

The Department of Music welcomes anyone who wants to take part, regardless of ability, in the diverse range of activities we have on offer. There are weekly peripatetic music lessons for a range of instruments provided by Rotherham Music Service and private tutors (woodwind, brass, percussion, piano, guitar, singing, strings) and, through these, engagement in the Rotherham Music Service Hub activities are encouraged. These lessons can contribute towards UCAS points, so it is a good opportunity for students to enhance their portfolios.

We also run a variety of ensembles on a weekly basis to encourage group music making, and we strive for sixth formers to take a leadership role to act as mentors for younger students. These include the school band, string ensembles, woodwind ensembles, vocal groups, ukulele group, advanced vocalists, and, where possible, we encourage students to create their own ensembles such as rock bands and pop groups. These activities are showcased in our termly events which include Vocal Evening, the Christmas concert, Piano Recital Evening and summer productions. These events provide opportunities for students interested in events management, stage production, lighting or sound to gain valuable experience.

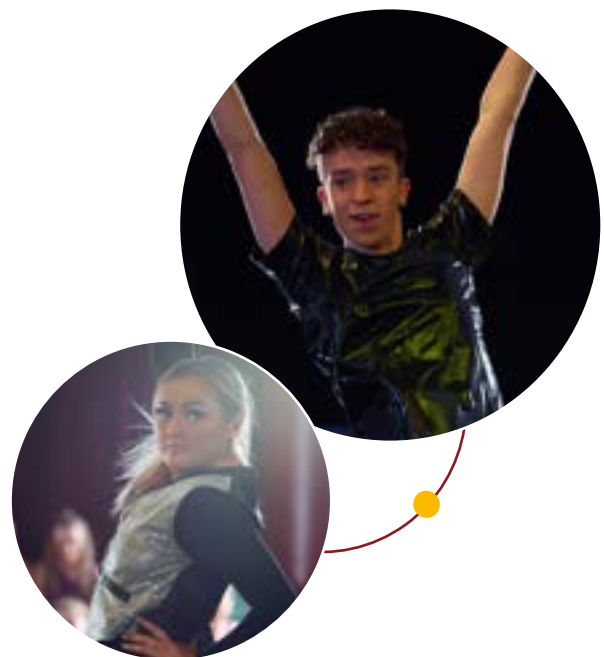


## Movement Evening

Movement Evening is our annual dance show, which takes place in February. It is definitely one of the highlights of our school calendar. This is a chance for all students to showcase their talents and be involved in dance performances (whether they study dance or not).

We have acts from all different genres and styles including kamikaze, street, break, contemporary and musical theatre, meaning there really is something for everyone. There are three sell-out shows, which means students perform to an audience of over 900 people across the three nights. Every year we have a different theme – this year was 'The Greatest Show' and students danced to a variety of show stopping songs from a range of musicals.

Everyone is welcome to get involved in Movement Evening; our sixth form enrichment dance is always a highlight.









## Panto

Wath Academy puts on an annual Christmas pantomime that is open for participation from all year groups. Students work hard each year to prepare for this showcase of talent, with rehearsals running twice per week after school in addition to a number of lunch time meetings and extra sessions required.

Behind the scenes, student participation is just as important: other students use this opportunity to take on advertising and backstage supporting roles.

Previous productions have included Cinderella and, possibly setting a record for the longest title, Dick Whittington, His Cat and the Mysterious Case of the Three Little Pigs – a hilarious blending of two fairy tales.





# Beyond the Classroom

## Saint-Étienne Visit

A Level French students embarked on a six-day enrichment visit to Saint-Étienne in France as part of an exchange-style visit, where students stayed with a French family whilst also gaining some work experience in a French primary school. While the trip's primary aim was to improve the quality and fluency of their spoken French, an abundance of other unforeseen educational benefits arose from the opportunity to experience a little slice of French culture. Students particularly appreciated the way their French family were keen to let them try traditional French dishes, such as la fondue, a melted cheese dish served in a big communal pot called a caquelon.

Students described working in the French primary school as "the most fulfilling part" of their trip, adding that it was "an amazing experience" they would never forget. They were able to help support young children in the classroom with their English lessons and fun, such as singing Christmas carols at a special Christmas showcase assembly for the entire school.

What most surprised students was how relaxed the school's atmosphere was compared to an English counterpart: neither adult nor child were required to wear a uniform and children called their teachers by their first names. Despite this, the quality of learning was excellent as the children were incredibly well behaved and enthusiastic.

Aside from work, students were also able to enjoy various sights of France, such as a sightseeing and shopping trip to Lyon, taking in sights such as an ancient Roman theatre and the Basilique (Basilica) Notre-Dame de Fourvière – both were spectacular. They also enjoyed visiting the Christmas markets in the centre of Saint-Étienne, which held hundreds of small chalets, all selling a variety of edible and non-edible goodies, with a grande roue (a big Ferris wheel) at the centre.





## Maths Inspiration Show

Year 12 students attended the exciting Maths Inspiration Show in Leeds.

Maths Inspiration is a national programme of interactive maths shows for KS5 students. It gives Year 12 students a chance to experience the UK's most inspiring maths speakers live in theatres, presenting mathematics in the context of exciting real-world applications.

Students participated in three interactive talks and a lively Q&A session at the end. The show connected our students to inspirational mathematicians, engineers and statisticians to open their eyes to the great opportunities in STEM and mathematical careers.

### The show included:

- Statistics - How maths supported the data collection in pandemic and helped with Covid-19 vaccine.
- Puzzling Maths - How to use maths to solve some trickiest problem!
- The Shape of Escape - How maths helps stadiums designers, music concerts organisers to design safe fire exit plans.
- Patterns, Predictions & Juggling - How can we spot patterns and predict the future!

## Barcelona Visit

Y12 Maths students spent four nights exploring the city of Barcelona. This visit helped students to understand the application of Maths to the real world. Students explored the magnificent CosmoCaixa Science Museum, one of the largest within the world, and also applied their knowledge of Mathematics to the architecture seen in the Gothic Quarter. It wouldn't be a trip to Barcelona without a trip to Nou Camp and Las Ramblas! Students enjoyed exploring all areas of the famous football stadium and enjoyed taking in the cultural delights and traditional cuisine on one of Europe's most famous shopping areas.

## Naples Visit

Geography students enjoyed taking their knowledge of Geography out of the classroom to explore the historical sites of Naples. Students enjoyed sunny day trips to Sorrento and Capri, including a boat tour to assess the coastal landforms and how they may differ to those in the UK. A crater walk around Mount Vesuvius was one of the many highlights of the trip where students enjoyed applying their knowledge to assess the structure and features of this famous volcano, including following the trail of lava from its last eruption.

## Tutor2U Workshop

Year 13 students studying Psychology, Sociology, Economics and Business attended this revision workshop held at The Vue cinema, in the White Rose Shopping Centre. Each subject attended sessions in a different screen and experienced lecture and seminar based sessions to prepare them for their final examinations. Students engaged in quizzes and competitions and each brought home a Tutor2u revision workbook.

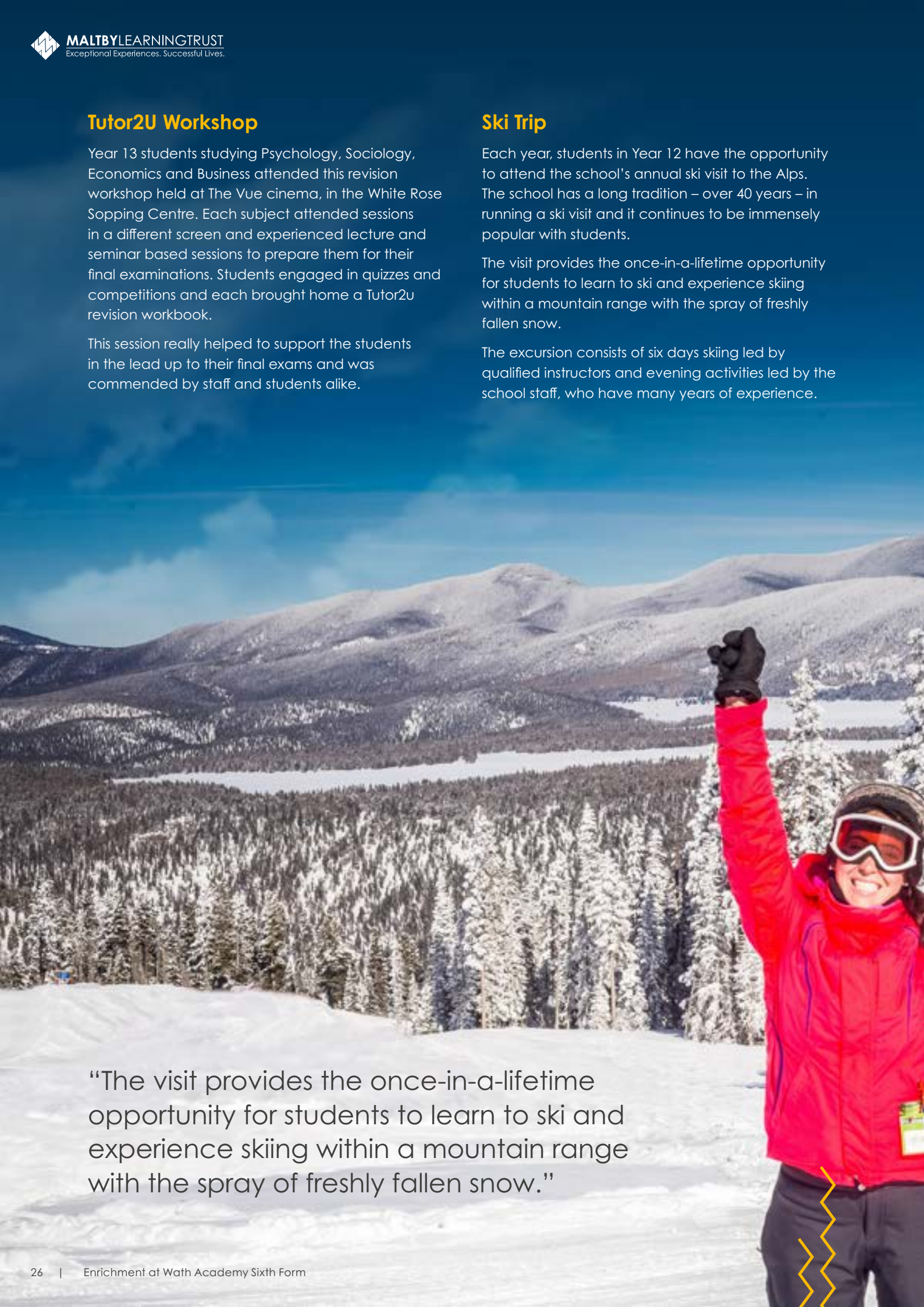
This session really helped to support the students in the lead up to their final exams and was commended by staff and students alike.

## Ski Trip

Each year, students in Year 12 have the opportunity to attend the school's annual ski visit to the Alps. The school has a long tradition – over 40 years – in running a ski visit and it continues to be immensely popular with students.

The visit provides the once-in-a-lifetime opportunity for students to learn to ski and experience skiing within a mountain range with the spray of freshly fallen snow.

The excursion consists of six days skiing led by qualified instructors and evening activities led by the school staff, who have many years of experience.



“The visit provides the once-in-a-lifetime opportunity for students to learn to ski and experience skiing within a mountain range with the spray of freshly fallen snow.”

## Hepworth Gallery Visit

Year 12 Product Design students take an annual trip to the Hepworth Gallery as part of their A Level course, enabling them to cover Assessment Objective 1 of the specification: first-hand observations. As students are working on the concept of curvy linear as a starting point for their own designs, the Hepworth is a perfect place to visit since Barbara Hepworth's work reflects this.

Students are required to take photographs of the Hepworth sculptures, make drawings and research the concepts and inspiration behind her work. They must then record this, in their own way, to form part of their personal study. This primary research is then used to inspire students with their own design work and development to a final manufactured product.

## Royal Society of Chemistry Christmas Lecture

Year 12 chemists took part in a trip to the University of Sheffield for an interesting lecture by Dr Tim Craggs about how light can be used to measure tiny objects.

The main focus of the lecture was to explain how cells replicate without causing damage to the body, but it had wider links to the three main branches of science: diffraction and the way light works (Physics); how the proteins have dyes attached to them and the measuring of the fluorescence of the dyes over time (Chemistry); and the replication and checking of the DNA in the cells by proteins (Biology).

Overall, it was a very interesting and accessible lecture for all students.



## The Diamond Visit

The Diamond in Sheffield is a STEM (Science Technology Engineering and Maths) higher education centre at the University of Sheffield.

Year 12 Physicists attended a specific taster day on aerospace engineering. The day involved studying a jet engine, engineering model planes and very advanced flight simulator systems – students were allowed to have a go on the latter, which was of particular interest to previous student Jai Barber, a budding pilot.

The day concluded with a STEM careers talk, enabling students to better understand better the breadth of future options in engineering and physics.

"It was a really great day," said one Year 13 student. "The most interesting part was learning how a jet engine works. It was fascinating to see how they manage to compress 1,200 kilograms of air per second to create enough thrust to propel a one-tonne aircraft up to speeds of over 550 miles per hour, at an altitude of 12,000 metres. That high, it's minus 50 degrees Celsius!"

## A Level Science Live

Many prestigious scientists gave lectures to Year 12 and Year 13 chemists at A Level Chemistry Science Live. These talks explored how these scientists have used chemistry to excel in pioneering projects. Professor Andrea Sella, Dr Philip Ball, Dr Suze Kundu, Professor Lucy Carpenter and Professor Peter Atkins all attended the event, alongside Michelle Oldfield, who gave useful exam tips about reaching Grade A\*.

The A Level Biology Science Live lectures allowed Biology students to listen to cutting edge research, including "Human Progress", "Is Man Just Another Mammal?", "A Life in Science", "Revenge of the Microbes" and "The Staggering Diversity of Planet Earth". Students were particularly inspired by Professor Robert Winston.

Attending A Level Physics Science Live, our A Level Physics students were enthralled by lectures on Quantum Physics, Nuclear Physics, Gravity and Plastic Electronics.

Each event was jam-packed with real insights into what our young scientists are capable of doing with their futures.

## Trip to Salou

Our football and rugby scholars had the opportunity to travel to Salou to play international football. As well as daily training sessions at the world class Mediterranean Sports Village, they also played competitive fixtures against a range of high level international teams. As part of the trip, students also explored the city of Barcelona to soak up the atmosphere of the Las Ramblas boulevard, visited the Nou Camp stadium and spent recreational time with their team mates playing beach volleyball and crazy golf.

**"As part of the trip, students also explored the city of Barcelona to soak up the atmosphere of the Las Ramblas boulevard."**





## Climbing Wall

The brand new 7.1 m high, eight-pitch climbing and bouldering wall has made an immediate impact on students at Wath.

The Enterprises Wall offers 82m<sup>2</sup> on the main wall and 10m of bouldering on the side. The wall has been designed to offer a mixture of some easier climbs for younger students, right up to 6c level, which gains top marks in A Level PE Climbing. PE staff have enjoyed being trained up so we now have eight qualified instructors to enable lots of students to access the wall. Wath Academy Sixth Form students can now select climbing as part of their A Level PE curriculum, and have access to the many and varied after-school climbing clubs now available .

## The Taming of the Shrew

Year 12 English Literature students had the opportunity to stay overnight in London to watch a live performance of *The Taming of the Shrew* at a Jacobean replica of the Blackfriars Theatre of Shakespeare's day. Students were able to experience the intimate production, lit solely by candlelight, bringing their studies to life.

This was followed by a visit to a number of places of cultural significance, including Tate Modern, St Paul's Cathedral and the British Library.





# Careers Education

Throughout their two years at sixth form, students will experience a comprehensive careers programme.

Careers education is delivered throughout the academic year via our tutor programme. Students will explore the range of opportunities available to them using the Unifrog platform. This platform uses information around students' personalities and interests to provide personalised careers options. Students also have the opportunity to take part in university visits, mock interview days and a two-week work experience placement.

We understand that parents also play a vital role in supporting students throughout university, degree apprenticeship and employment applications. As a result, we hold a Year 12 Parents and Carers evening, which allows us to share important information around post-18 options and processes so that we can collaboratively meet the needs of all students.

As a school, we work in partnership with HEPPSY to provide students with a wide range of opportunities such as completing projects with PhD students via The Brilliant Club and working alongside the Linacre Institute to support applications to Russell Group universities.



# Higher Education

Each year students visit a number of different universities to develop an understanding of university life. Last year, Year 12 students visited Magdalen College in Oxford and experienced academic sessions as well as campus tours.

All students were given advice on the application process and how to strengthen their applications to highly selective universities.

Additionally, all Year 12 students were given the opportunity to visit the University of Leeds, the University of Lincoln or De Montfort University. Student ambassadors toured students around the campus and the accommodation on offer and shared useful insight into life as a student as well as student finance.





# Outdoor Activities

## Golf Scholarship

Wath Academy Sixth Form's golf scholarship programme at Waterfront Golf is going from strength to strength. Since its launch in 2018, we have seen some great improvements in the players who have worked hard over the winter months preparing for the golf seasons ahead.

The state-of-the-art training facility enables professional coaches Frank Houlgate, Danny Walsh and Chris Dennis to oversee all aspects of the game and prepare structured practice programmes, so that our golf scholars are never left without anything to do. We were lucky enough in our first year to have Ben Schmidt win numerous events at national level, including the prestigious Brabazon Trophy! Luca Houlgate won the Sheffield Junior Stroke-Play Championship as well as setting a new course record at Waterfront. Charlie Daughtrey made a fantastic effort to win the South Yorkshire Schools Championship at Hickleton and he also won the North of England Qualifier for the Brabazon at Lindrick.

## Netball Team

Our netball scholarships give students the opportunity to develop their netball skills whilst studying A Level and Level 3 BTEC qualifications. Aimed at the most talented netballers, students will benefit from dedicated netball training and skills coaching built into their timetable. Netball scholars will also have the opportunity to play fixtures regionally and more further afield and will be given the chance to develop their skills on national and international trips.

Our scholars will also develop their own coaching and leadership skills by assisting with teams in younger year groups, designing and delivering training sessions and taking the role of umpire.



*Wath Academy Sixth Form's golf scholarship is perfect for anyone serious about rising to a professional standard in golf.*





## Football Scholarships

Our football scholarships offer a unique opportunity for talented footballers to further develop their football education alongside A Levels or BTEC Level 3 qualifications. Students are trained by UEFA A/B-licensed coaches four times a week, gain their refereeing qualifications and the opportunity to complete an Introduction to Coaching Football qualification. They also get the chance to develop their skills on our elective international trips.

Since its launch in 2018, our boys have won the AOC Yorkshire and Humber League, whilst also representing the school at local and regional levels. The squad that consisted of 18 players grew to over 30 players in year two, and we are pleased we now have two teams regularly playing fixtures on Wednesday afternoons.

Our players have progressed on to a wide variety of exit routes with players attending a variety of universities and playing for semi-professional clubs. Recent alumnus Jamie McGinness was our first to secure a football scholarship in the USA and it is likely that we will have a number of other scholars joining him in the coming years.

Launching in 2019, our girls' football scholarship has seen many positive experiences. The inaugural girls' post-16 team, the first to play at Wath Academy Sixth Form for many years, competed against many established colleges and sixth forms in its opening year.

The squad of 13 players have found themselves in fixtures against teams that play at academy training grounds, as well as opportunities in futsal, a league that they won in their first season.

The girls have also involved themselves in a number of FA initiatives, including primary school tournaments, school events and FA Wildcats programmes. This is part of the FA's vision to grow the female game. With the third close upon us, we are looking forward to welcoming a new cohort to join the current set of talented Year 12 girls.



“At both levels, students are given the opportunity to plan their own route, navigate, overcome rain, sun and fatigue and, potentially, figure out where they went wrong to get back on track!”



## The Duke of Edinburgh's Award

At Wath Academy, we offer the Bronze level Duke of Edinburgh's Award to our students in Year 10 and the Silver level to our students in Year 12 (who do not need to complete the Bronze award first). It is a brilliant opportunity to get active, learn some new skills and make new friends!

This enrichment rewards commitment: students complete at least an hour per week on each chosen activity and collect evidence (photos, reports, an activity log, videos) to show what they have done and how they have improved, which are uploaded for approval by the DofE charity.

There are four sections to complete for both awards: Physical, Skill, Volunteering and Expedition. A comprehensive list of activities can be found online at [dofe.org/do/ideas](http://dofe.org/do/ideas), but here are a few ideas for inspiration: athletics, football, dance, horse riding, cheerleading, mountain biking (physical activities); playing a musical instrument, cooking, plant growing, learning to drive, creating a blog, dressmaking (skills activities); charity work, helping in the local/school library, working at an animal rescue centre, helping in a care home, Youth Parliament, conservation or litter picking (volunteering activities).

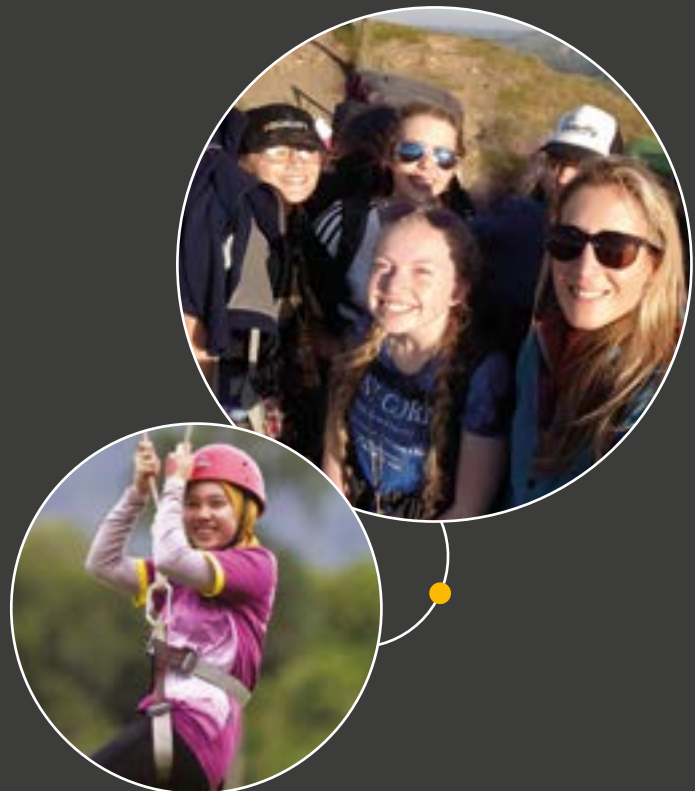
**"It is a brilliant opportunity to get active, learn some new skills and make new friends!"**



For the expedition, our Bronze students spend two days walking in the beautiful countryside around Cawthorne and Penistone, where they camp overnight at simple campsites. At Silver level, students spend three days walking in the beautiful Peak District.

At both levels, students are given the opportunity to plan their own route, navigate, overcome rain, sun and fatigue and, potentially, figure out where they went wrong to get back on track!

The benefits of achieving the DofE Award are endless. So many of our students say it's life-changing. Achieving an Award will give students skills, confidence and an edge over others when they apply for university or a job. Beyond their academic achievements, universities want to see evidence of the "soft skills", such as communication, commitment, leadership and teamwork. The DofE Award is a fantastic way to evidence these skills. Students also make a difference to their community, become fitter and healthier, make new friends and have memories to last a lifetime.





# Christmas at Wath

## Christmas Lunch

Christmas lunch is a notable date on the calendar at Wath Academy. The hall is transformed with long tables to accommodate two entire year groups (with several dining sessions throughout the day), and features all the usual Christmas paraphernalia, such as crackers, jokes and prizes. Students are treated to a delicious main course of turkey with all the trimmings (with a vegetarian and vegan option available, of course!) and a Christmas pudding or ice cream for dessert. Live reindeer and snow machines also make it a truly unforgettable experience.

“Christmas lunch is a notable date on the calendar at Wath Academy.”











Wath  
Academy  
Sixth Form



**MALTBYLEARNINGTRUST**  
Exceptional Experiences. Successful Lives.

[www.wathacademy.com/sixthform](http://www.wathacademy.com/sixthform)

✉ [sixthform@wathacademy.com](mailto:sixthform@wathacademy.com)    🐦 [@Wath\\_SixthForm](https://twitter.com/Wath_SixthForm)    📺 [@wathacademysixthform](https://www.youtube.com/channel/UC...)